



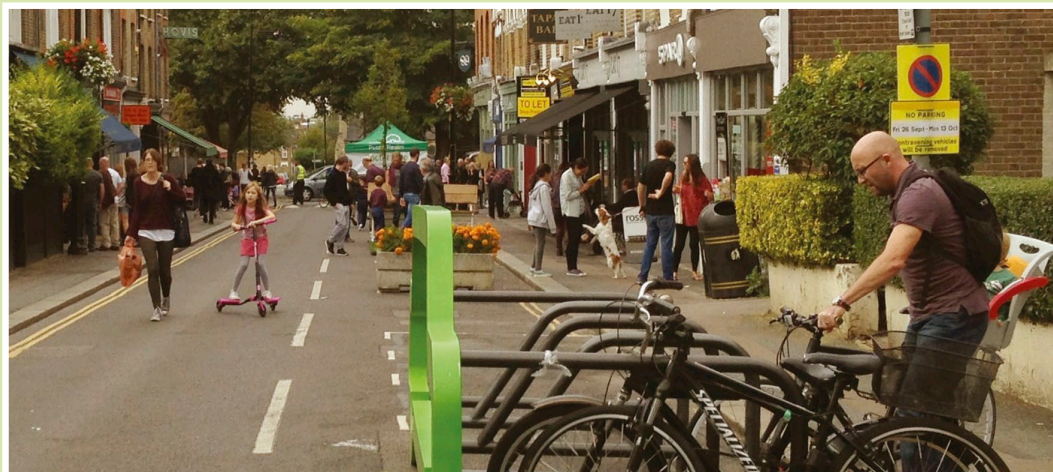
Walthamstow Village area trial

The trial is now coming to a close, on Monday 13 October all road restrictions will be removed and the area will return to normal. Thank you to those residents and businesses who got involved in some of the supporting activity and those that have provided us with feedback on the scheme. We appreciate that the trial may have been frustrating for some and we thank you for your patience during this time.

We want to hear from you

As we near the end of the trial we are asking residents in the Walthamstow Village area to share views on the Mini-Holland trial. Whatever your experience, we want to hear your views on all aspects of the trial, from if you feel that the trial has improved your street in terms of safety and noise to whether or not the Council could have implemented the trial differently in anyway.

From **Friday 10 October**, you can take part in our online questionnaire and share your views by visiting www.walthamforest.gov.uk/miniholland



Trial period Friday 26 September 2014,
running until Monday 13 October 2014



TRANSPORT
FOR LONDON



Waltham Forest



Throughout the trial, Council officers have been in the area ready to answer your questions, as well as visiting households across the trial area to find out what you think about the proposed changes and the trial as a whole.

Don't worry if you haven't had the opportunity to provide us with your feedback yet, an **online questionnaire** will be launched this **Friday 10 October**.

To complete the questionnaire go to **www.walthamforest.gov.uk/miniholland**

Your feedback along with the data collected from the trial will be used to help shape future proposals to improve the road layout of the area. We want to ensure that changes are fit for the whole community so your views will play a fundamental role in the development of future plans, which will go through a full public consultation process before anything is implemented.

What's next?

In early November we will hold workshops with the local community including resident groups, businesses, schools and all other interested parties. In these workshops we'll gather further feedback on the trial, what worked, did not work, elements to keep, amend or remove and the other changes the community would like to see on their street following experience of the trial.

These workshops will help us develop specific proposals for their area, which will then go out to further consultation before final plans are made and agreed.

Details for the workshops will be mailed to residents week beginning Monday 13 October 2014, and further information will be available at **www.walthamforest.gov.uk/miniholland**

To complete the questionnaire and for further information following the trial visit:
www.walthamforest.gov.uk/miniholland

To provide further feedback please email **miniholland@walthamforest.gov.uk**