

# Markhouse Village

Waltham Forest Council was awarded £27million by Transport for London to improve the borough's roads and town centres making them great places to live, work and travel around.

Markhouse Village is one of a series of residential areas in the borough that was earmarked for changes under the Mini-Holland Programme. It is home to 5,832 households, including residents and businesses, and popular with people who walk and cycle travelling to Walthamstow Central, Walthamstow market and shopping centre, Lea Bridge Road, Bakers Arms and further into Leyton.

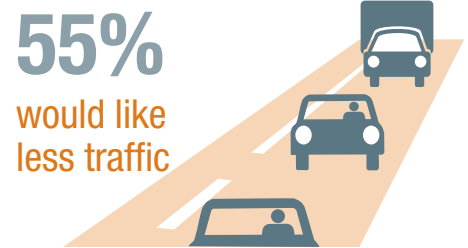
In September 2015, we carried out a perception survey to find out what local

people think about the area and the type of improvements they would like to see. The survey was online and over 5,800 copies were hand delivered to all households in the area. A total of 611 people took part and provided over 1,000 individual comments.

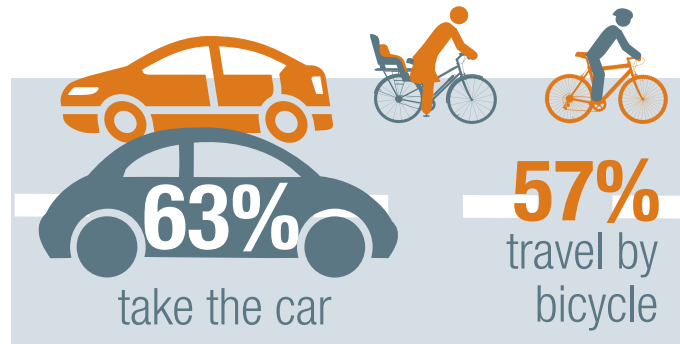
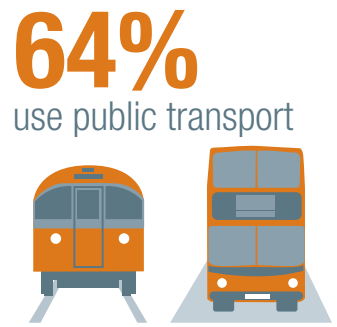
At this stage there are no definite plans in place for the Markhouse Village scheme area. Over the next year we will work with Transport for London to decide the next steps for the scheme. When a plan is developed we will use the results from the perception survey to develop a design for Markhouse Village and will write to residents and businesses with information on how they can get involved.

The headline results below are based on multiple choice questions:

**55%** of respondents would like to see more plants and trees to make Markhouse Village a more pleasant place to walk and cycle



## Respondents' feelings towards Markhouse Village



For more information visit [www.enjoywalthamforest.co.uk](http://www.enjoywalthamforest.co.uk).